



# 3 WAYS TO MAKE MORE MONEY BUILDING BETTER WALLS

With ARXX® Insulated Concrete Forms

**ARXX**<sup>™</sup>  
forms

# 1. TAKE CONTROL OF YOUR FOUNDATIONS



*"An ARXX foundation creates more low cost, ready-to-use living space, so it's easy to sell to homeowners. All people have to do is feel the difference. With ARXX you get warm and dry, with conventional you get cold and clammy! That's why I built my new office on an ARXX foundation."*

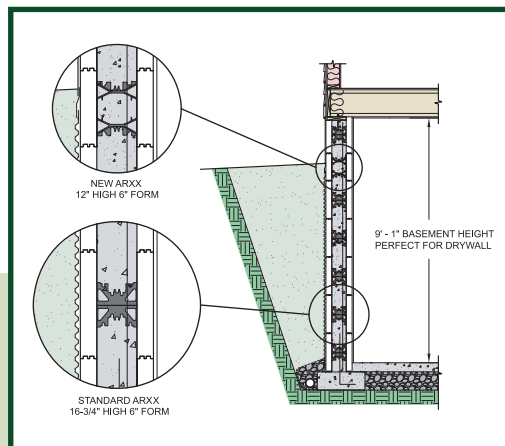
— Mark Barstow, Homebuilder



**Build Year Round** - With ARXX Forms concrete cures properly in winter cold and summer heat.



**Save Time and Money** - Install formwork, framing, insulation, vapor barrier, and strapping, in one step.



## BUILD BETTER BASEMENTS FASTER AND EASIER THAN EVER BEFORE

### THE #1 PRODUCT WITH CHAMPIONSHIP SUPPORT

ARXX is the number one Insulated Concrete Wall Company in North America. ARXX has the most production facilities, the widest network of distributors, and the best products. In fact, ARXX forms are the only Insulating Concrete Form (ICF) that provides a solid to-solid attachment for any finishing material (like drywall, siding or brick ties). The ARXX ICF patented, exposed web is unique! Plus, every time you build with ARXX products, you get the best technical support in the industry.

### BUILD FASTER AND BETTER WITH ARXX

ARXX is the stay-in-place concrete form designed by builders, for builders. It is the complete wall building system. ARXX forms are lightweight, pre-assembled, and lock together. We provide the widest product selection in the industry, so you can build walls and foundations in any shape, size, or design.

### TAKE CONTROL OF THE PRODUCTION SCHEDULE

Don't let foundation subcontractors control your schedule. With ARXX, your crew can do it. We give you everything you need to build walls and foundations that are straight, plumb and square. The ARXX Hook and ARXX Lok are designed to tie and straighten stacked courses in any weather. We offer an OSHA compliant bracing and scaffolding system, so your crew can work safely and efficiently, in complex site conditions like slopes with stepped footings.

### PERFECT FOR BASEMENTS

ARXX forms are 16 3/4" high, so six courses stack to a finished ceiling height of 8'1". Add another row of 12" high forms, and you get a 9'1" finished basement. It's easy. You can protect the foundation with our peel-and-stick moisture barrier, or use our premium damp proofing, ARXX Maxx® Foundation Wrap.

### GET STRONGER CONCRETE AND BUILD YEAR ROUND

ARXX Forms are stay-in-place, so your concrete gets a slow, moist cure for maximum strength. It doesn't matter whether it's the middle of winter, or the hottest day of the summer - ARXX Forms insulate the concrete from temperature extremes, so you can build all year round.

### ADD VALUE TO YOUR BOTTOM LINE

The cost to build an ARXX finished foundation is about the same as a conventional foundation. (Actual costs vary by region.) What's more, you are building value for your customers: a warm, dry, ultra-comfortable, basement. Build with ARXX.



# 2. BUILD CODE-APPROVED WALLS IN A SINGLE STEP

## ARXX IS THE PROVEN AND TESTED WALL SYSTEM

Build a fire resistant, sound rated, insulated, common wall in just one step. We have done the engineering. We have done the testing. We have won the approvals – you just put it together.

When you build with ARXX, you are working with the number one Insulated Concrete Wall System in North America. ARXX has been approved by all major North American building codes.

## FIRE RATED

You get a 2-hour UL/ULC listed Fire Resistance Rating on every 6" ARXX wall you build. You can double it to a 4-hour rating by adding fiber to the concrete. Fire retardant is added to the EPS foam providing a self-ignition temperature of over 800° (430°C) in every ARXX form we build.

## SOUND RATED

You can easily attain Sound Transmission Classification (STC) up to 50 or higher with an ARXX wall. That means peace and quiet for neighbors on both sides of every common wall you build – perfect for condos, townhouses, and even movie theatres. We have lots of test data and case studies. Call our customer service team for more information **800-293-2310**.

## STRENGTH AND SECURITY

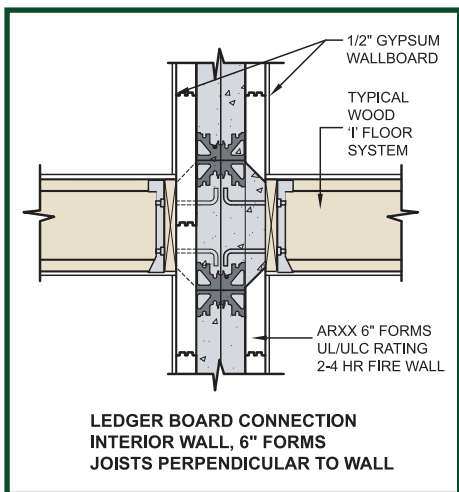
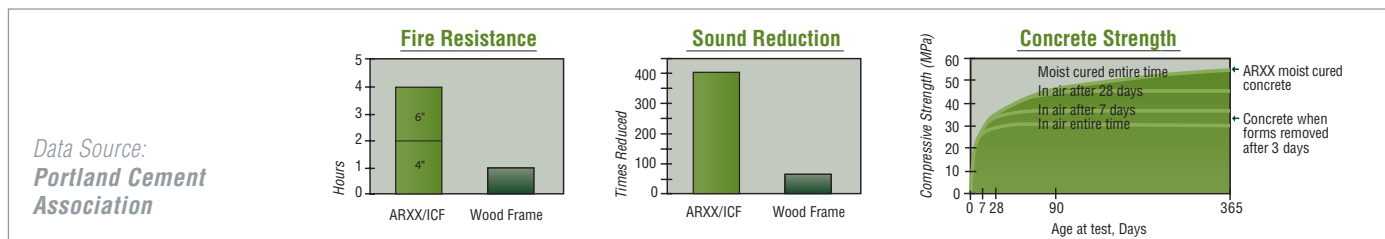
ARXX walls are built like a sandwich with a reinforced concrete core. The structural integrity of this steel reinforced concrete core provides exceptional protection from hurricanes, tornadoes, and even rowdy neighbors. Our patented, exposed web gives you solid-to-solid contact for all your finishing materials, which dramatically reduces screw pops, siding sag, and customer call-backs.

## IMPROVE YOUR PROFITS

No one has more testing or code approvals than ARXX. No one has a better support team. We have over 15 years experience installing over 80 million square feet of walls.

An ARXX common wall costs about the same as a conventional wall system, but it is a lot easier to build. (Actual costs vary by region.)

Build with ARXX. Build a better bottom line. Build code-approved walls in just one step.



*"With ARXX, it's easier to build code-rated common walls with the fire rating and sound proofing we need. It's faster, too. I don't have to wait for subtrades or rent forms. And in the winter, I don't need to heat the walls - I just pour and cover it with an insulated tarp."*

– Colin Biel, Homebuilder

## PROVEN AND TESTED SO IT'S EASIER FOR YOU TO BUILD CODE-APPROVED WALLS



**Sound Control** - Build real peace and quiet with a Sound Transmission Classification (STC) up to 50 or higher



**Fire Rated** - Get UL/ULC Resistance Rating (FRR) of 2-4 hours when you build with ARXX Forms

# 3. BUILD ABOVE-GRADE PROFITS



*"ARXX in particular is easier to build with. I do a lot of custom homes so when there are changes of direction, or radius walls, structurally it is easier to get the engineering right. ARXX is practical, easier, simpler and faster in many situations."*

— Mike Evans, Homebuilder



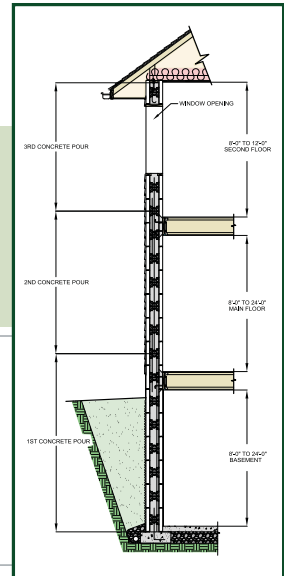
**Sell Comfort** - ARXX homes are cooler in the summer and warmer in the winter.



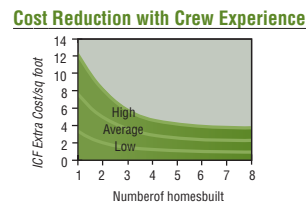
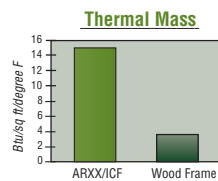
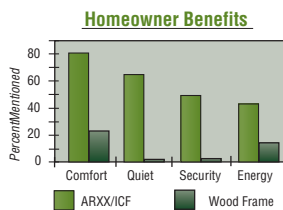
**Sell Security** - ARXX homes can withstand 150mph winds or more.



**Sell Value** - Homeowners can reduce energy costs



Data Source:  
Portland Cement  
Association



## BUILD WITH ARXX ICF TO THE ROOF AND CREATE LASTING VALUE FOR YOUR CUSTOMERS AND BUSINESS

### HOMEOWNERS ARE SOLD ON COMFORT

Homeowners want it all. They want comfort, durability, constant temperature, quiet, improved indoor air quality, and lower heating and cooling costs. But most of all homeowners want peace of mind.

With ARXX Forms you can build it, easier than ever before. ARXX is the number one Insulated Concrete Wall System in North America. We have over 15 years of real world building experience, and the ARXX customer service team will put all that experience to work for you. And when the job is finished, your customers will have a home that meets and exceeds all their expectations!

### BUILD IN EXTRA COMFORT AND SAVINGS

ARXX walls can virtually eliminate the "cold spots" that occur in conventional frame walls, because your home is wrapped in two continuous layers of foam insulation. An ARXX home has less air infiltration than a conventional frame house, so uncomfortable drafts are virtually eliminated.

The solid concrete core of an ARXX wall stabilizes the temperature because of its thermal mass. So homeowners get constant temperatures, even when the outdoor temperature fluctuates throughout the day. With its high R-values, low air

infiltration, and high thermal mass, you can reduce your initial building costs by installing a smaller HVAC system. Plus, the homeowner can save significantly on their monthly heating and cooling costs compared to a conventional home.

### BETTER INDOOR AIR QUALITY AND SECURITY

The monolithic concrete wall that surrounds every ARXX home protects it from unwanted air or moisture infiltration. With ARXX it is much easier to control your indoor air quality and enjoy the benefits of fewer pollens or pollutants.

The structural integrity of reinforced concrete provides exceptional protection from hurricanes and tornadoes. Laboratory tests simulating hurricane storm damage demonstrate that ARXX walls can withstand wind debris traveling over 100 mph.

### CREATE EXTRA VALUE

Above grade exterior ARXX walls do cost more to build than conventional frame walls, but they create real benefits for your clients: increased comfort, lower maintenance costs, better security, and better long-term value. In terms of life cycle costs, these benefits will cover the upgrade costs. So build with ARXX, and charge your customers fair value for the extra benefits you deliver. That's how you build up your business.

# WHICH WALL IS THE BEST?

## ARXX WALLS VERSUS CONVENTIONAL WOOD FRAME WALLS

Feature	ARXX Forms
<b>FIRE RESISTANCE</b>	UL/ULC listing 2-4 hour Fire Resistance Ratings.
<b>SOUND RESISTANCE</b>	STC up to 50 or higher.
<b>ENERGY EFFICIENCY</b>	Thermal resistance of R-22. Can exceed the performance of an insulated wood framed wall.
<b>WIND RESISTANCE</b>	Wind resistance up to 150mph. Meets Dade County Protocol PA 201-94 for hurricane storm damage.
<b>BUILDING STEPS</b>	Install framing, insulation, vapor barrier, air barrier, and strapping, all in one step.

## ARXX WALLS VERSUS CONVENTIONAL POURED CONCRETE WALLS

Feature	ARXX Forms
<b>ENERGY EFFICIENCY</b>	Thermal resistance of R-22. Can exceed the performance of an insulated wood framed wall.
<b>BUILDING STEPS</b>	Install framing, insulation, vapor barrier, air barrier, and strapping, all in one step.
<b>CURE STRENGTH</b>	Concrete gets a slow, moist cure for maximum strength. The insulating value of ARXX Forms protects the concrete from temperature fluctuations while it cures, so you can build year round.



**Complete System** - Everything you need: A complete line of forms, hooks, damp proofing, and bracing.



**No Screw Pops** - ARXX's exposed web gives you a direct, solid-to-solid attachment for your wall finishing materials.



**Patented Web** - ARXX's patented web is the strongest design in the industry. Build with it and count on it.



**No Waiting Around** - Don't wait for subs. Take charge of your production schedule from day one. Get your own crew to build the foundations.

# BUILD WITH ARXX FORMS!

## THE BENEFITS OF BUILDING WITH ARXX INSULATING CONCRETE FORMS

Feature	ARXX Walls
<b>EXPOSED, PATENTED WEB</b>	ARXX's patented, exposed web is the only ICF web not covered by a layer of foam so you get a direct, solid attachment.
<b>SOLID-TO-SOLID ATTACHMENT</b>	Patented exposed web provides a solid bearing for the attachment of finishes like drywall, stucco, siding and brick ties. This dramatically reduces the likelihood of screw pops or siding sag.
<b>WEB</b>	The web has been designed to provide superior strength for ARXX Forms.
<b>CERTIFICATIONS</b>	ARXX ICF has a UL/ULC fire rating, and approval by all of the major North American Building Codes
<b>BRACING SYSTEM</b>	ARXX's easy-to-use, OSHA reviewed, bracing system provides a safe working platform to help you build straight, plumb walls.
<b>TIGHT INTERLOCKING DESIGN</b>	ARXX Forms fit together easily and snugly with a tight interlock which minimizes movement during concrete placement.

## GREAT PEOPLE TO BUILD WITH!

### WE'RE HERE TO HELP YOU SUCCEED

Everybody on The ARXX Team has the same goal – to help you succeed. That means you can count on the best technical support and customer service in the industry.

We have expert full time field and technical staff, ready to help when you need it.

### WE UNDERSTAND YOUR BUSINESS

We know what it's like to work in the field. We have over 15 years experience helping contractors build with ARXX all across North America. From winter builds in Alaska to summer builds in Phoenix, from autumn builds on the side of the Rocky Mountains, to spring builds on the Florida coast line. We've built it.

Everybody on our team is ready to share their experience and their knowledge with you.

**Contact Us** - When we say something is going to happen, it does. Because we're committed to keeping our promises.

**1-800-293-3210**



**Guaranteed Reponse** - Call us with a question or request and we will respond ASAP. Guaranteed support when you need it.



**Delivered On-Time** - We have delivery points all across the country and we are committed to getting you the right product on the promised date.



# BUILD YOUR BUSINESS WITH THE NUMBER ONE ICF. WE BACK IT UP 100% WITH SUPERIOR SUPPORT

Proven Product + Unbeatable Support Team = A Superior Build

## BUILD STRONG, ENERGY EFFICIENT WALLS

With ARXX, you can build stronger, energy efficient concrete walls and foundations. ARXX Forms are lightweight, pre-assembled, and stack together quickly. You don't need expensive tools. You don't need expensive labor. You get a complete system with a wide range of forms, the ARXX bracing and scaffolding, the ARXX Hook, and the ARXX Maxx Foundation Wrap. So your crew will build it quickly, and right, the first time – straight, plumb and square.

- **Perfect for Basement:** ARXX forms easily stack to an 8' 1" or a 9' 1" finished ceiling height.
- **Save Time and Labor:** Install formwork, framing, insulation, vapor barrier, air barrier, and strapping, all in one step.
- **Build in Any Weather:** ARXX forms insulate poured concrete for an even cure in any weather, winter or summer.
- **Patented Exposed Web:** Solid-to-solid attachment to ARXX's patented, exposed web for interior/exterior finishing materials.
- **Complete Product Line:** Standard sizes, corners, angles, brick ledge, accessories, and more.
- **ARXX Hook and Lok:** Designed so you can tie and straighten stacked courses in any weather.
- **Maxx® Foundation Wrap:** ARXX's premium below-grade damp proofing barrier.
- **ARXX Bracing System:** Our superior bracing, alignment and scaffolding systems helps you safely build straight, plumb, and square walls.
- **Estimating Software:** Fast and accurate so you know exactly what you need.

- **Training:** We'll teach you everything you need to know to build better structures with ARXX.
- **Guaranteed Delivery:** ARXX has the most distributors and most plants. We deliver what we promise.
- **Proven Team:** Over 15 years experience building more than 80 million square feet of ARXX walls and foundations.
- **30 Year Warranty:** Every ARXX form is protected by the ARXX limited 30 year warranty.
- **Superior Support:** We have the staff and the expertise, when you need it. Call **1-800-293-3210**.

## BUILD WITH THE NUMBER ONE PRODUCT

ARXX Corporation is the number one Insulated Concrete Wall Company in North America. ARXX has the most production facilities, the widest network of distributors, the best support team, and the best products. In fact, ARXX forms are the only Insulating Concrete Form (ICF) that provides a solid-to-solid attachment for all finishing material (like drywall, siding or brick ties). The patented web is unique! ARXX is the one with the stripes.

## GET CHAMPIONSHIP SUPPORT

Every time you build with ARXX Forms, you can count on the best customer support in the industry. We have expert full time field and technical staff, ready to help when you need it.

Call us at **1-800-293-3210**.

## IT'S A WINNING GAME PLAN

You can count on us 100%. Build better walls. Build a better bottom line. Build your business. Build with ARXX forms.



