

# Redefining Building.



## con·fi·dent

noun |'kän-fə-dənt|

What you feel when you work with the best ICFs in the industry:

- 1 High energy efficiency,
- 2 Providing big savings on heating and cooling costs,
- 3 A cost effective and faster build, and
- 4 The best support in the ICF industry.
- 5 **Redefining building.**

# ARXX™ ICF

Redefining building.

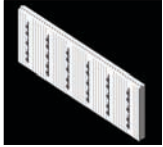
Product Catalogue: ARXX Edge

# ARXX<sup>™</sup> Edge | Product Catalogue

ARXX Edge Forms and Accessories

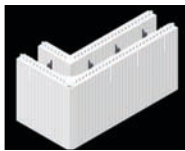
Note: all forms are identified by the nominal concrete core thickness.

	SKU	length	width	height	weight (lbs.)	package
standard panel block (2 panels per form)	EB16-0-STD	48"	2 1/2"	16"	2.9 lbs.	6



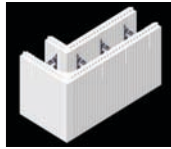
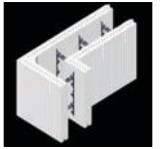
\*Note: requires two panels per form.

	SKU	length	width	height	weight (lbs.)	package
4" corner form (2 panels per form)	EB16-4-90	16", 32"	9"	16"	5 lbs.	3L / 3R



\*Note: connectors not included

	SKU	length	width	height	weight (lbs.)	package
6" 90° corner (2 panels per form)	EB16-6-90	16", 32"	11"	16"	4.9 lbs.	3L / 3R



\*Note: connectors not included

	SKU	length	width	height	weight (lbs.)	package
8" 90° corner (2 panels per form)	EB16-8-90	16", 32"	13"	16"	4.8 lbs.	3L / 3R



\*Note: connectors not included

	SKU	length	width	height	weight (lbs.)	package
brick ledge (per one panel)	EB16-0-EXT	48"	N/A	16"	3.6 lbs.	6



	SKU	length	width	height	weight (lbs.)	package
taper top (2 panels per form)	EB16-0-TAPERTOP	48"	2 1/2"	16"	5.8 lbs.	6



**ARXX<sup>™</sup> ICF**  
Redefining building.

# ARXX™ Edge | Product Catalogue

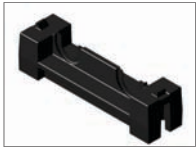
ARXX Edge Forms and Accessories

	SKU	length	width	height	weight (lbs.)	package
6" 45° corner	EB16-6-45	16", 32"	11"	16"	4.8 lbs.	4



\*Note: connectors not included

	SKU	length	width	height	weight (lbs.)	package
4" connector	EB04-0-CONN	-	-	-	-	1000



	SKU	length	width	height	weight (lbs.)	package
5" connector	EB05-0-CONN	-	-	-	-	1000



	SKU	length	width	height	weight (lbs.)	package
6" connector	EB06-0-CONN	-	-	-	-	500



	SKU	length	width	height	weight (lbs.)	package
8" connector	EB08-0-CONN	-	-	-	-	500



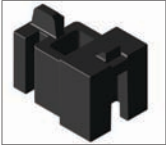
	SKU	length	width	height	weight (lbs.)	package
10" connector	EB10-0-CONN	-	-	-	-	500



# ARXX™ Edge | Product Catalogue

ARXX Edge Forms and Accessories

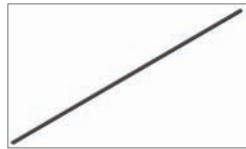
	SKU	length	width	height	weight (lbs.)	package
tie connector	EB0T-0-ANCHOR	-	-	-	-	500



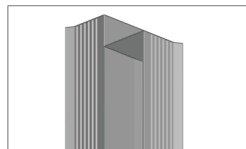
	SKU	length	width	height	weight (lbs.)	package
splice connector	EB0S-0-CONN	-	-	-	-	1000



	SKU	length	width	height	weight (lbs.)	package
brick ledge rail	EB0B-0-RAIL	48"	-	-	-	50



	SKU	length	width	height	weight (lbs.)	package
90° panel connector	EB16-90-CONN	47"	5.25"	2.85"	2.45	16



	SKU	length	width	height	weight (lbs.)	package
45° panel connector	EB16-45-CONN	47"	5.25"	3.5"	2.95	9

