

6110 Abbott Drive  
Omaha, NE 68110  
1-877-369-2562  
www.foxblocks.com

00480 Fox Buck Tech Doc Rev-F.pdf

# FOX BUCK CONTINUOUS INSULATION



Contractors, design professionals and building owners have been asking to address the ICF buck issues for years. The Fox Blocks team now has the answer. An "ICF FULLY INTEGRATED CONTINUOUS INSULATION" window and door buck for residential and commercial applications.

Dual full length 1" x 1" grooves to create solid concrete barriers against drafts and moisture penetration

Notches ensure proper Fox Buck and Fox Block alignment

Designed slots in the buck face allow for trapped air to escape

2" thick for easy measurements

Full 1 1/2" wide full height fastening zone for door and window attachment

48" height to match block lineup

Full width fastening zones @ 8" o/c across the buck face surface

Circles marked @ 16" o/c for sill cutouts to ensure proper consolidation

## FOX BUCK NUMBERS

Available Sizes	6"	8"
Total Width	11.25"	13.25"
Total Length	48"	48"
Bundle Quantity	10	10
Bundle Weight	25 lbs	30 lbs



Photo above reveals consolidated concrete barriers created within the Fox Buck

The 1" x 1" notches create a dual barrier against drafts or moisture penetration. When installed properly, the concrete barrier protection is continuous around the entire opening. These barriers also anchor the Fox Buck to the wall with enough strength to hold in most weather\* conditions

\* Contact Fox Blocks for high wind anchoring recommendations.



The Fox Buck was designed to be compatible with the Fox Energy Stick, maintaining the continuous concrete barriers.

# INSTALLING THE FOX BUCK

6110 Abbott Drive  
Omaha, NE 68110  
1-877-369-2562  
www.foxblocks.com

00480 Fox Buck Tech Doc Rev-F.pdf

## INSTALLATION STEPS:

### STEP 1

- Build wall as normal with opening 4" larger than rough opening called for.
- Ensure all opening rebar is properly placed and secured.
- Double check opening measurements.

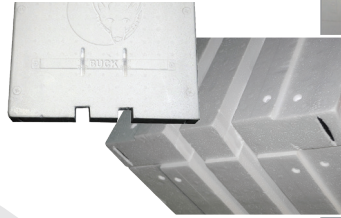


Temporary support can be attached to Fox Buck fastening zones.



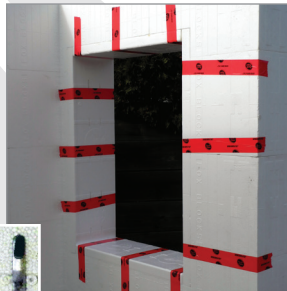
### STEP 2

- Cut sides to length and notch each end 1" as in photo.
- Place Fox Buck sides into place and hold with tape.  
*Option: Spray foam can be used to completely seal buck to block*



### STEP 3

- Cut and place top and bottom Fox Bucks  
*Option: Spray foam can be used to completely seal buck to block*
- Penetrate all slots with a nail or screw to ensure entrapped air can escape during concrete placement.



### STEP 5

Brace inside opening to hold square during concrete placement.



### STEP 4

Cut and remove all circles in sill. This will ensure proper concrete consolidation during concrete placement.

*Note: It is preferred to have these circles cut out prior to placing the Fox Buck sill in place. This will eliminate any foam cutouts accidentally falling into wall cavity.*



### STEP 6

When openings are close to a corner, strapping is required to hold corner in place during concrete placement.

